

WHEEL CHOCK



SARIS
INFRASTRUCTURE



The Wheel Chock holds bikes upright while filling tires with air or making minor adjustments. With universal mounting, the Chock can be mounted to the ground with one of our pumps or mounted directly to our Deluxe Public Work Stand.

Product Specifications

- Supports bikes without kickstands while inflating tires
- Tire friction stops roll-back
- Upright position eliminates trip hazard
- Accommodates tires up to 2.75" and wheel diameters up to 29"
- Cannot lock bikes to wheel chock
- ADA compliant

Universal Bike Wheel Chocks:

Floor Mounted or Stand Mounted (Deluxe Only)

Indoor Only



Powder-Coated Black

RTL Code:
CIWC33682B

Indoor or Outdoor Options



Galvanised Finish

RTL Code:
CIWC26190G



Stainless Steel

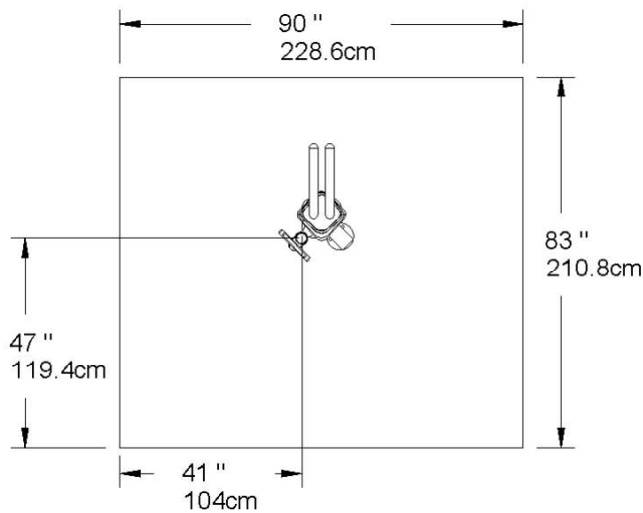
RTL Code:
CIWC26190SS

V2.1

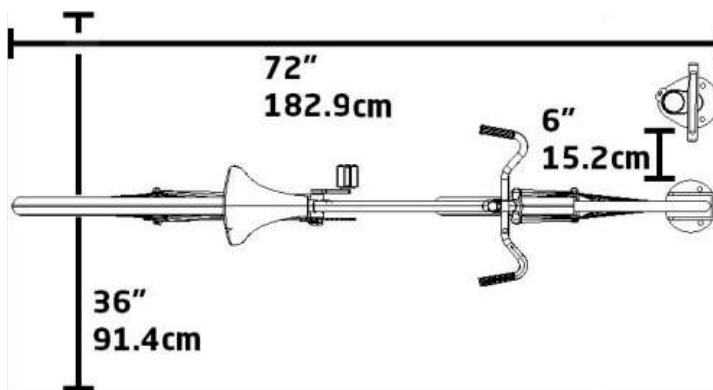


Wheel Chock

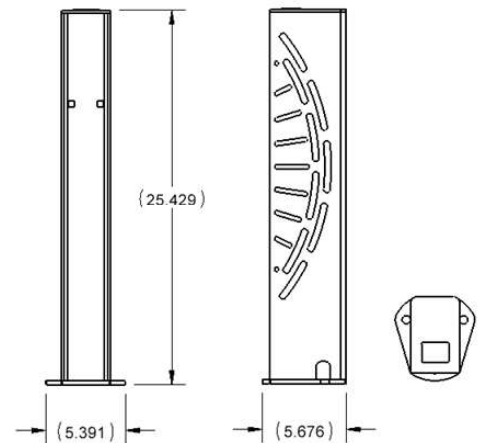
Layout with deluxe public work stand mount



Layout with pump



Wheel Chock line drawing dimensions



Add Ons

Public Bike Pumps:



Floor Mount

Indoor or Outdoor Use

RTL Code:
CIHSP26246



Stand Mount

Integrates into a Repair Stand - See below

Indoor or Outdoor Use

RTL Code:
CIHSP26242

Deluxe Bike Repair Stands:



Powder-Coated Black

Indoor Use Only

RTL Code:
CIDW26347B



Stainless Steel

Indoor or Outdoor Use

RTL Code:
CIDWS26347S

Note: Graphic wrap can go full height if required.

For all New Zealand enquiries, please email sales@rtl.co.nz or cyclinginfrastructure@rtl.co.nz