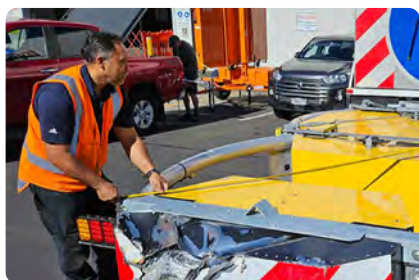




# Annual TMA Inspections

**Build and maintain a reliable fleet with RTL**

It is critical that your attenuator is properly maintained, serviced and repaired to ensure it will work as designed. RTL is the exclusive distributor for the Scorpion TMA range in NZ and we take our safety responsibility very seriously. Thus we have the Scorpion Attenuator Inspection Programme which includes annual checks and post impact assessments.



The Inspections are a annual service, that covers all Scorpion Attenuators, including the NCHRP-350 Scorpion TL-2 and TL-3 units and Scorpion II MASH Units, including the TL-2 Metro, TL-2 Metro Slim and the TL-3 C-90 and Model C Range.

## Why should you have your attenuators inspected?

- **Keep motorists and your crew safe**
- Meet your Health and Safety at Work Act goals and obligations
- Tender for work contracts with up-to-date, certified safety gear
- **Maintain a safe and functional fleet of attenuators**
- Limit exposure to serious injury and death in an event of impact/accidents
- we work with your drivers at point of drop off to raise awareness of maintaining and regular checks

## What does the Inspection cover?

Our assessments include the cartridge tubes, absorber modules (A, C, D & E), stress cracks, hydraulic pumps & actuators, operation testing cycles and check all dimensions are in accordance with specified parameters. If the unit requires repairs, we will supply a report and quotation. If the unit passes, a report & letter is supplied. Find out more and book online: [www.rtl.co.nz/post/scorpion-attenuator-inspection-programme](http://www.rtl.co.nz/post/scorpion-attenuator-inspection-programme)

## TMA Post Impact Survey

If a TMA has been involved in any incident or impact, a post-impact inspection is essential. The attenuator is designed to save lives, so it must be kept in top condition through regular servicing and inspection. We provide post-impact reports and can repair or replace components to return the TMA to service safely.



## Maintenance and Servicing:

TMA's require regular maintenance. RTL recommends daily checks, monthly greasing, annual TMA inspections, and pivot pin replacement every two years. For more information, visit [www.rtl.co.nz](http://www.rtl.co.nz) or contact our Service Team.