



Wheel Stops & Speed Humps

Our Wheel Stops and Speed Humps are part of our wider suite of traffic calming products. They are installed to create a safe environment for both vehicles and pedestrians within the confined area of a car park. Both the Wheel Stops and Speed Humps are fully compliant to AS/NZ 2890.1:2004 standards and are manufactured from rubber, highly durable and easy to install. Fixings for both Concrete and Asphalt surfaces are available (sold separately). See reverse for more details.

Wheel Stop Range



Length: 1650mm
Width: 130mm
Height: 100mm
Weight: 16kg

Our Wheel Stops are effective delineation of parking areas and essential part of any car park, designed to inhibit encroachment into an opposing parking space, or to protect walls, gardens, vehicles, high curbs and other areas. Recommended for use on level surfaces.

- | | |
|----------------------------|---|
| Rubber Construction | A wheel stop that will not warp, crack or rot |
| Visible | Reflectors for increased visibility for both pedestrians and motorists |
| Durable | UV stable and resistant to moisture, oil and extreme temperatures |
| Flexible | Allows conformity to the contour of virtually any road surface |
| Easy to Install | Able to be installed by only one person, with three fixings per wheel stop. |
| Compliant | Fully compliant to AS/NZ 2890.1:2004 standards. |



EV Charging - Wheel Stops: **ORDER: MH28 102**

- New green reflective option
- Ideal for dedicated EV (Electric Vehicle) parking spaces
- Clear demarcation of EV charging areas



Standard Wheel Stops: **ORDER: MH28 101**

- Yellow reflectors
- Enhances visibility and safety in parking areas
- Essential parking safety device

Modular Speed Humps



	Middle	Ends
Length:	500mm	250mm
Width:	350mm	350mm
Height:	50mm	50mm
Weight:	7.10kg	3kg

Speed Humps are ideal for traffic and pedestrian safety. They are best used in medium to low volume shopping centres, multi-level car parks, commercial driveways, service stations, and anywhere that you want to further reduce the speed of vehicles.

- | | |
|----------------------------|--|
| Modular Sections | Increase / decrease the number of middle sections to suit various road width |
| Rubber Construction | Creates a speed hump that won't chip, crack or rot |
| Visible | Multiple reflectors and alternative yellow / black colour for increased visibility |
| Flexible | Allows conformity to the contour of virtually any road surface |
| Easy to Install | Installed with four fixings per middle section and two per end cap |
| Compliant | Fully compliant to AS/NZ 2890.1:2004 standards. |

500mm Mid Section:

- Effective speed management
- 350mm travel distance
- Maintain safer speeds

MH27 7EA



250mm End Caps:

- Provides an aesthetic finish
- Improves the overall appearance
- Eliminates tripping hazard

MH27 7A



MH27 7B



Rated to a Maximum:
20 ton truck @40km/h

Wheel stops & Speed Humps: Manage Car Park & Traffic Safely & Effectively

V2.5 MAR 2025





Product Specifications & Installation

Wheel Stop Range

Length: 1650mm
Width: 130mm
Height: 100mm
Weight: 16kg

Three fixings each



EV Charging - Wheel Stops: **MH28 102**

- New green reflective option
- Promote dedicated EV (Electric Vehicle) parking spaces
- Clear demarcation of EV charging areas



Standard Wheel Stops: **MH28 101**

- Yellow reflectors
- Enhances visibility and safety in parking areas
- Essential parking safety device

Speed Humps - Middle Sections

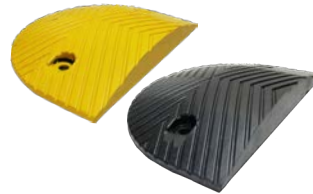


Four fixings per Mid Section

Length: 500mm
Width: 350mm
Height: 50mm
Weight: 7.10kg

Stock code: MH27 7EA

Speed Humps - End Caps



Two fixings per End Cap

Length: 250mm
Width: 350mm
Height: 50mm
Weight: 3kg

Stock codes:
Yellow End Cap MH27 7A
Black End Cap MH27 7B

Fixings for Concrete

For Wheel stops: Sleeve Anchors* (12 x 130mm)
 RTL Code: MH27 DYN12
 Washer sold separately

For Speed humps: Sleeve Anchors* (10 x 75 mm)
 RTL Code: MH27 DYN10
 Washer sold separately

For Both: RTL Washer Code: MH27 WASHER

* Sleeve anchors are also known as Dynabolts or Masonary Anchors™



Fixings for Asphalt

For Wheel stops: Rebar Spikes (12 x 250mm)
 RTL Code: MH27 6RB12
 RTL Washer Code: MH27 WASHER30

For Speed humps: Coachscrew (10 x 100mm) & Sleeve
 RTL Code: MH27 6MA

Washer included
 in fixing code



Installation Instructions

- Step One:** We recommend that you chalk the intended position and the holes prior to drilling.
Step Two: Use the appropriate sized drill bit to drill down into the road surface at least 50mm for concrete & 100mm for asphalt.

For Concrete

Step Three: Tap in the sleeve anchor and tighten into concrete. We recommend a M12 x 28mm x 3mm galvanised washer under the nut of the sleeve anchor to minimise any "pull through".

For Asphalt

Step Three: Drive the rebar spikes in the ground using a heavy duty hammer making sure you drive them fully into the rebate area.

Note:

Bondurox C Adhesive / Epoxy can also be used in-conjunction with the fixings, for additional adhesion when installing wheel stops & speed humps in high impact areas. Available in a 700g tube.

Stock code:
 MO40 BDXC

