



# Traffic Cone Recycling Criteria

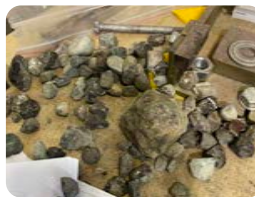
RTL have a cone recycling policy that involves taking old road cones back. All we ask is that the old, used road cones meet the minimum acceptance criteria outlined below as they are then reprocessed into new recycled products via a shredding process. Customers only need to cover freight back to the depot. There are no additional fees for recycling. Here is the process:

- Customer contacts RTL about cone recycling via our online form: **\*\* ONLINE FORM COMING SOON \*\***
- These are assessed and must meet acceptance criteria below.
- RTL then sends you instructions and a PDF to attach to the cones
- **If unacceptable cones are returned, then the customer will be charged at a rate of \$6.00 + gst per cone / per cone piece for the disposal of these as they cannot be recycled.**

## Pre Return Check:

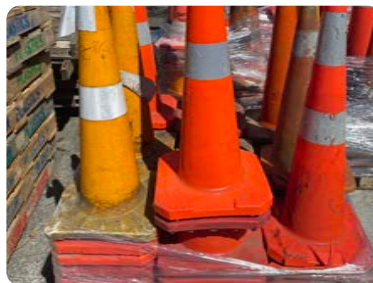
- **Check & Remove any rocks / stones from the underside of the cones.**

These can cause serious issues with the machinery.



## Acceptable Cones:

- Cones are acceptable even if they have punctures and small areas of staining due to materials such as asphalt, cement slurry or dirt – see below:
- Cones with the upper broken away from the base are acceptable if they meet the above and both pieces are returned and stacked together as one.
- **Part cones with the full upper part of the cone without the base are acceptable.**



## Unacceptable Cones:

- If the cone has large amount of bitumen (tar) or gravel, chipseal or any other foreign objects like screws, stones, nails, in or on them, then they cannot be recycled.
- **Broken bases or small broken parts of a cone by themselves are also not acceptable.** If these are returned, then the customer will be charged \$6.00 + gst per piece / cone, for the disposal of these as they cannot be recycled.



Screws Nails or Stones



Excessive Bitumen



Excessive Dirt, Slurry or Chipseal



**If unacceptable cones are returned, the customer will be charged at a rate of \$6.00 + gst per cone / per cone piece for the disposal.**