

Scorpion II C90 MASH TL-3 Vertical Attenuator: GREASE POINTS – LOCATIONS:

The Truck-Side frame: Critical – Monthly Greasing

- Has two grease points as per **Fig.1 & 2**
- It can only be accessed when the TMA is in the stored position.
- **Fig.3**, The TMA in the stored position. The circles indicates where the grease points are.



Fig.1 LHS centre grease point



Fig.2 RHS centre grease point



Fig.3 TMA in the stored position and where to access the grease points.

Auckland

Wellington

Christchurch

Invercargill

RTL Auckland

31 Maurice Road, Penrose,

Auckland 1061, New Zealand

P O Box 14111, Panmure, Auckland

P +64 9 259 2600

E sales@rtl.co.nz

V1.0 October 2023

0800 785 744 rtl.co.nz

The Back-up frame: Critical – Monthly Greasing

- Has four grease points as per **Fig.4 & 5**
- It can only be accessed with the TMA deployed.

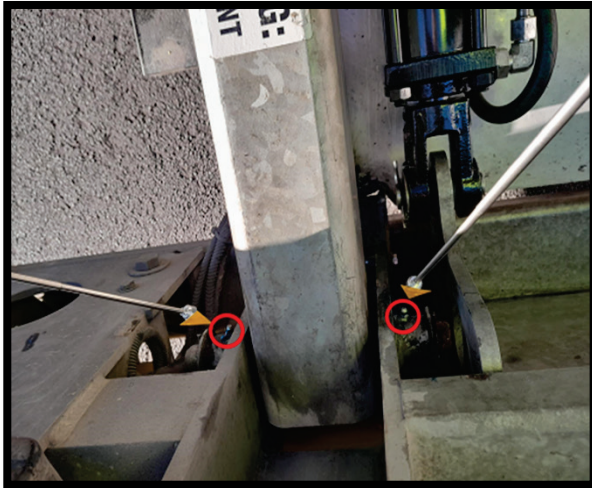


Fig.4 LHS grease points

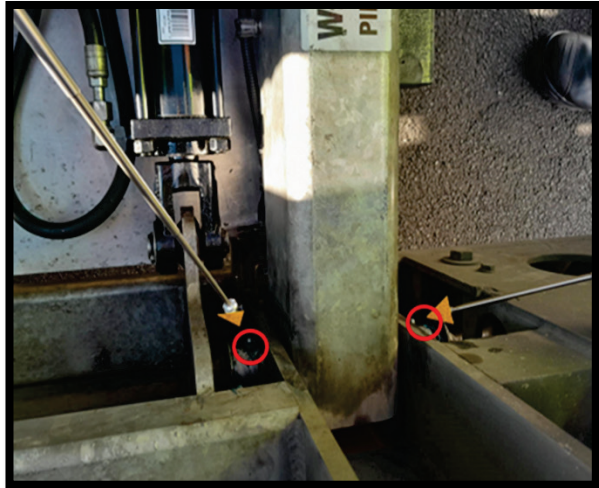


Fig.5 RHS grease points

Lock-out arms: Not critical - Condition based assessment and treatment

- Has two grease points as per **Fig.6**
- It can only be accessed when the TMA is in the fully deployed position.

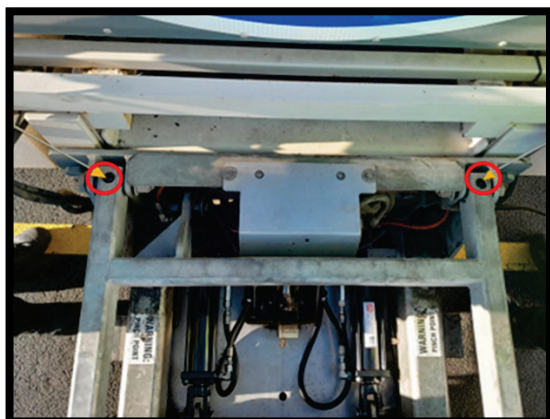


Fig.6. Lockout arms

Locking Mechanism: Monthly greasing

- Has one grease point as per **Fig.7**
- It can only be accessed when the TMA is deployed.



Fig.7 Locking mechanism