



SOSEC 200 Barrier

Site Security & Access Control

The SOSEC 200 is a fully solar-powered mobile barrier designed for high-traffic sites that require reliable, off-grid control of vehicle access. Offering keyless entry control, remote capabilities, and rapid deployment without mains power, it provides reliable site protection built for harsh construction environments.

Reliable and Robust Relocatable Solar Hybrid Simple install

Applications

- Site Access
- Major Projects
- Construction Sites
- Housing Developments
- Infrastructure & Roading
- Haul Road Operations

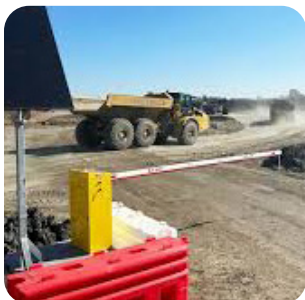


Rugged Remote

Four button remote to control multiple barriers at the same or different times

RTL Code: ET MBIS200

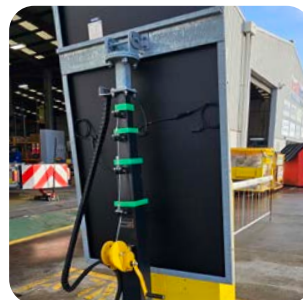
Package Includes: 5m fixed boom with full length full length drop skirt and drop leg, remote fob, pole mounted intercom*, telescopic solar panel, fork-lift compatible galvanised steel base.



Reliable and Robust



Forklift Base for Quick Deployment



Telescopic Solar Panel



Highly Visible Drop Skirt





Intercom & Dial Pad*

Manage barrier arm operation remotely with any of the following methods:

Intercom Call Button:

Site Supervisor can be called and remotely trigger the barrier using the dial pad on the mobile device. If the first person is unable to answer it is possible to cascade the call to two other numbers



Pin Number:

Can be set to trigger the barrier using the physical pin pad



Dial-to-open:

a user with a whitelisted phone number can open the barrier by calling it using their cell phone



Android App:

Use the App on your smartphone to send a SMS commands to open the barrier arm remotely



* Note: A voice / data / simcard is required to use the Intercom

Telematics & Tracking Package*

ADD + Includes remote access, GPS tracking, downloadable data and battery monitoring & alerts.



Talk to our team about the benefits of our telematics & tracking package. An annual subscription is required per barrier.

Product Code: ET MBID365

GET ONE YEAR FREE

GS6 Over Height Sensor

ADD + Designed to protect any asset, bridge, gantry or overhead power lines from an over height vehicle strike.



GS6 Package includes the GS6 Over Height Sensor, GS6 Pole, Base Plate and 40m cable on drum.

Product Code: ET MBIGS6

Max Laser Range: 6m (lane width)
Max Pole Height: 7.5m

Technical Information

| | |
|-------------------------|---|
| Description | Off grid 24/7/365 solar automated vehicle access control barrier |
| Daily Cycles | Up to 300 operations daily on solar power - min 1.5 hours of sun required per day |
| Max Span | White 5 metre aluminium boom with dropskirt and support leg |
| Base detail | 1200mm x 1200mm Galvanised Mild-Steel Base with Forklift points |
| Solar | 380w PV with 360 rotation, sectional height adjustable mast collapsible for transport |
| Locking | Direct drive locked gearbox with internal manual release |
| Access Control | 50m remote control via handheld Fob |
| Safety | Non-contact safety beam with auto close and auto exit |
| Additional Connectivity | Intercom: GSM Intercom and Call Button - (sim card required) Telematics: Portal Access, GPS Tracking & downloadable data (subscription required) |

Indicative Right Hand:



Indicative Left Hand:



The Barriers can be configured for left or right hand position. Please discuss further with us.



Facebook



LinkedIn



Instagram



YouTube



www.rtl.co.nz



0800 785 744



sales@rtl.co.nz